



INSTRUCTION BULLETIN

No. 340480
Machine: 6100, 6200
Published: 5-01/00
System: SWEEPING

NOTE: DO NOT DISCARD the Parts List from the Instruction Bulletin. Place the Parts List in the appropriate place in your machine manual for future reference. Retaining the Parts List will make it easier to reorder individual parts and will save you the cost of ordering an entire kit.

NOTE: Numbers in parenthesis () are reference numbers for parts listed in Bill of Materials.

Installation instructions for kit number 384169

SYNOPSIS / PROBLEM:

This kit contains the parts needed to replace the damper solenoid on the model sweeper/scrubber.

Please follow step-by-step instructions.

SPECIAL TOOLS / CONSIDERATIONS: 1/2" Rounded file

(Estimated time to complete: 1 hour)

PREPARATION:

(Refer to FIG. 1 thru 4)

FOR SAFETY: Before leaving or servicing machine, stop on level surface and set parking brake. Then turn off machine and remove key.

1. Raise the operator seat and secure in place with the seat support rod.
2. Disconnect battery cables from machine.



WARNING: Always disconnect battery cables from machine before working on electrical components.

6100 INSTALLATION:

(Refer to FIG. 1 and 2)

1. Remove the hopper from the rear of the machine.
2. Unlatch and lower the filter to gain access to the damper solenoid.
3. Disconnect the solenoid from the main wire harness.
4. Locate the damper solenoid mounted on the side of the damper. Remove and discard the pin retainers, both retaining pins and the connecting link. (Refer to FIG. 1)
5. Remove and discard the solenoid from the weldment on the side of the cylinder.
(Refer to FIG. 1)

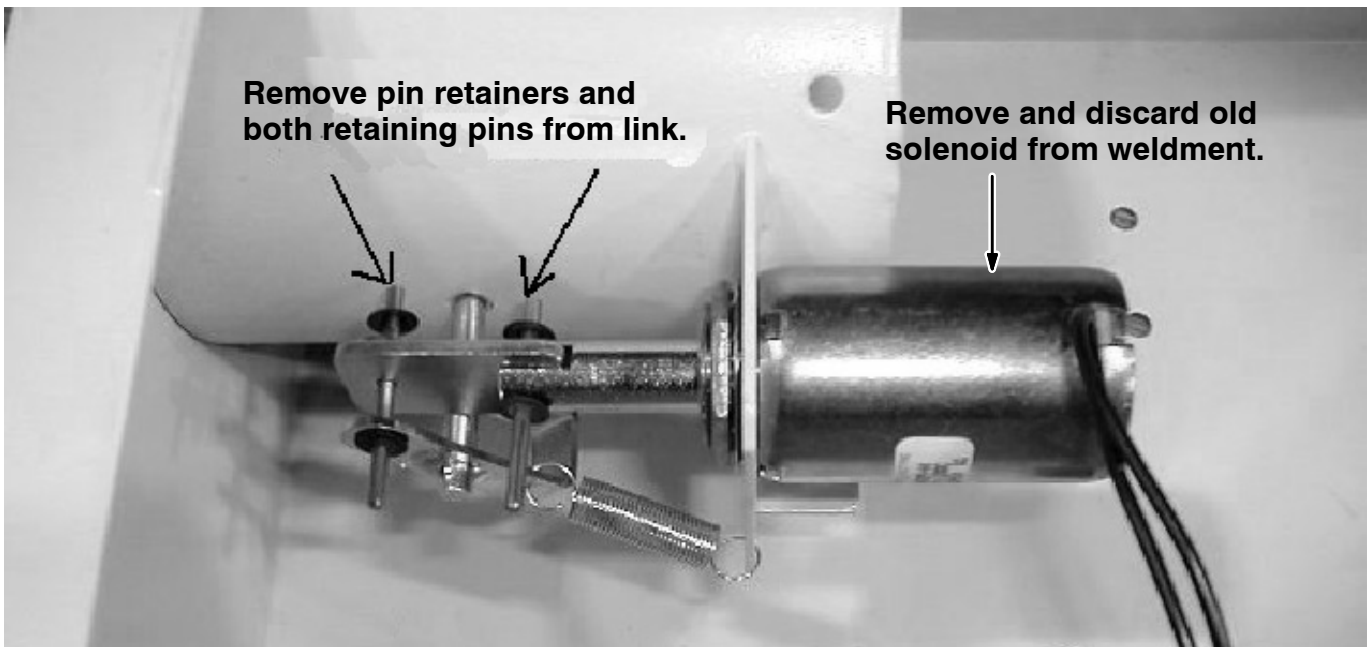


FIG. 1 - DAMPER SOLENOID REMOVAL, 6100

6. File down the flat edge of the D shaped solenoid mounting hole, until the mounting hole is round.
7. Mount the new solenoid (1) in the new round solenoid mounting hole. (Refer to FIG. 2)
8. Connect one end of the new link (2) to the new solenoid (1) with a new pin (3) and pin retainers (4). Connect the other end of the link (2) to the damper rod with a new pin (3) and pin retainers (4). (Refer to FIG. 2)
9. Connect the new solenoid to the main harness.
10. Raise the filter back into the closed position and secure with latches.
11. Replace the hopper in the rear of the machine.
12. Reconnect the battery cables to the machine. Raise the operator's seat, disengage the seat support rod and lower the seat to the closed position.
13. Start the machine and check the damper for proper operation.

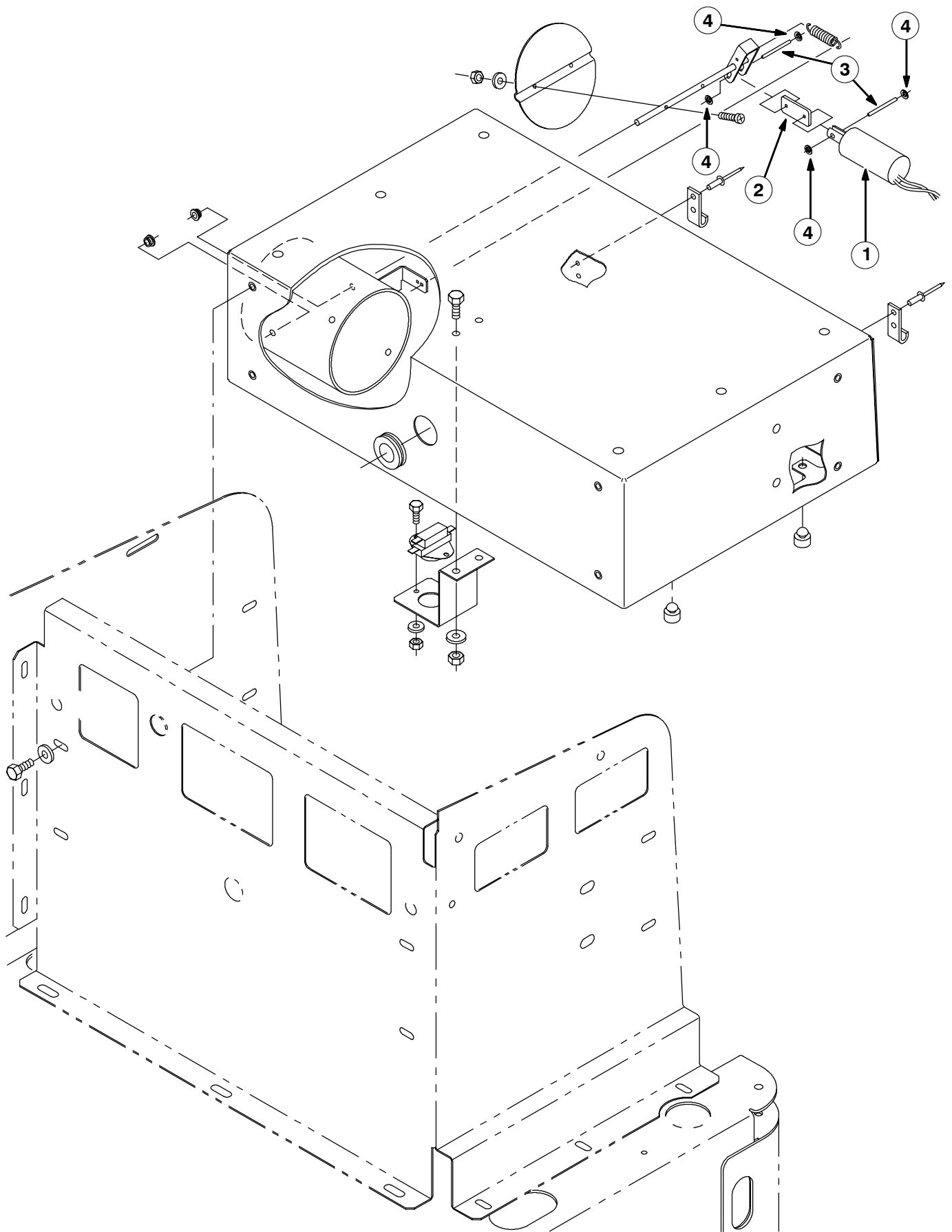


FIG. 2 - SOLENOID DAMPER KIT, 6100

6200 INSTALLATION:

(Refer to FIG. 3 and 4)

1. Drive the machine onto a clean, flat work surface and set the machine parking brake.

FOR SAFETY: Before leaving or servicing machine, stop on level surface and set parking brake. Then turn off machine and remove key.

2. Start the machine. Press and hold the top of the hopper switch until the hopper is fully raised. Release the switch into the hold position.



WARNING: Lift arm pinch point. Stay clear of hopper lift arms.

FOR SAFETY: When using machine, make sure adequate clearance is available before raising hopper.

NOTE: Be aware that the minimum ceiling height needed to high dump the hopper is 2286mm (90 in).

3. Push the hopper support bar in place onto the support cylinder.



WARNING: Raised hopper may fall. Engage hopper support bar.

4. Slowly lower the hopper by pressing down and holding the hopper switch until the hopper support bar rests on the support bar stop.



WARNING: Lift arm pinch point. Stay clear of hopper lift arms.

5. Turn the machine power off.
6. Raise the operator seat and secure in place with the seat support rod.
7. Disconnect battery cables from machine.



WARNING: Always disconnect battery cables from machine before working on electrical components.

8. Locate the solenoid bracket guard on the side of the fan plate.
9. Remove and set aside the solenoid bracket guard and mounting hardware.
10. Disconnect solenoid from main wiring harness.
11. Remove and discard the pin retainers, both retaining pins and the connecting link.
(Refer to FIG. 3)
12. Remove and discard the solenoid from the weldment on the side of the fan plate.
(Refer to FIG. 3)
13. File down the flat edge of the D shaped solenoid mounting hole, until the mounting hole is round.
14. Mount the new solenoid (1) in the new round solenoid mounting hole. (Refer to FIG. 4)
15. Connect one end of the new link (2) to the new solenoid (1) with a new pin (3) and pin retainers (4). Connect the other end of the link (2) to the damper rod with a new pin (3) and pin retainers (4). (Refer to FIG. 4)
16. Replace the solenoid bracket guard with the set aside hardware. (Refer to FIG. 4)

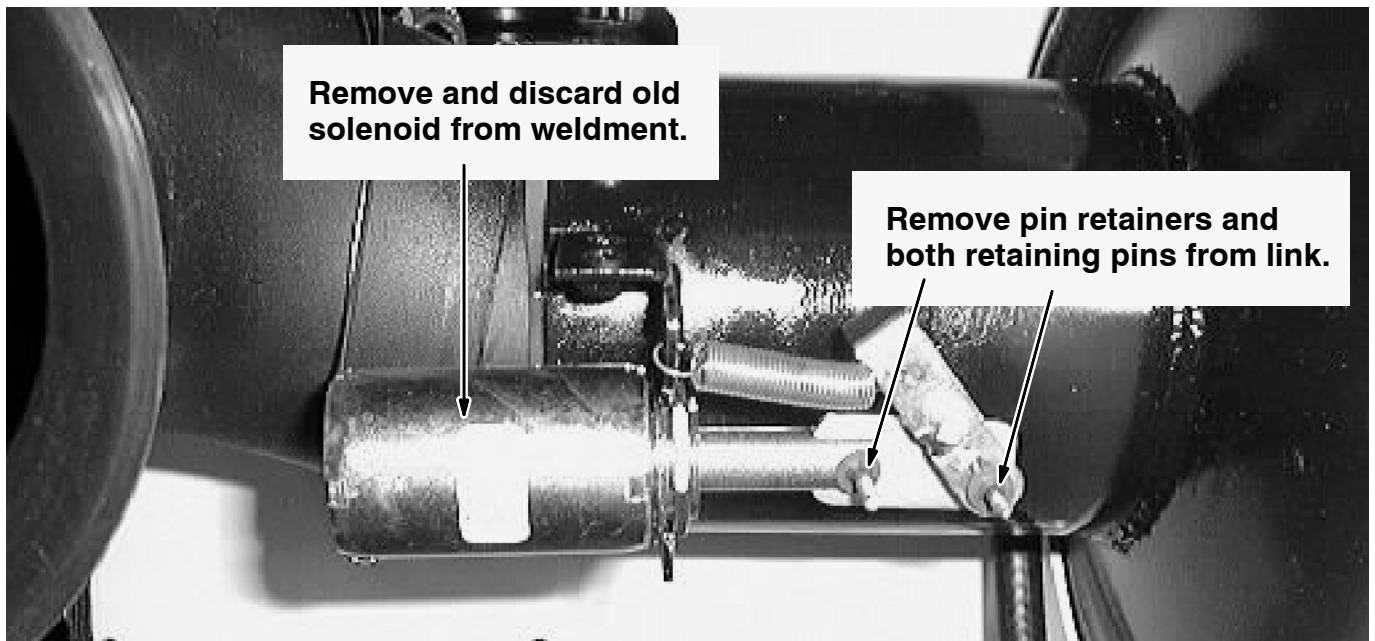


FIG. 3 - DAMPER SOLENOID REMOVAL, 6200

17. Reconnect the battery cables to the machine. Raise the operator's seat, disengage the seat support rod and lower the seat to the closed position.
18. Start the machine.
19. Press and hold the top of the hopper switch until the hopper is fully raised. Release the switch in the hold position.

FOR SAFETY: When using machine, make sure adequate clearance is available before raising hopper.

NOTE: Be aware that the minimum ceiling height needed to high dump the hopper is 2286mm (90 in).

20. Move the hopper support bar off the cylinder into the storage position.

! WARNING: Lift arm pinch point. Stay clear of hopper lift arms.

21. Press and hold the bottom of the hopper switch until the hopper is in the fully lowered position.

! WARNING: Lift arm pinch point. Stay clear of hopper lift arms.

22. Check the damper for proper operation.

TENNANT COMPANY
P. O. Box 1452
Minneapolis, MN 55440-1452

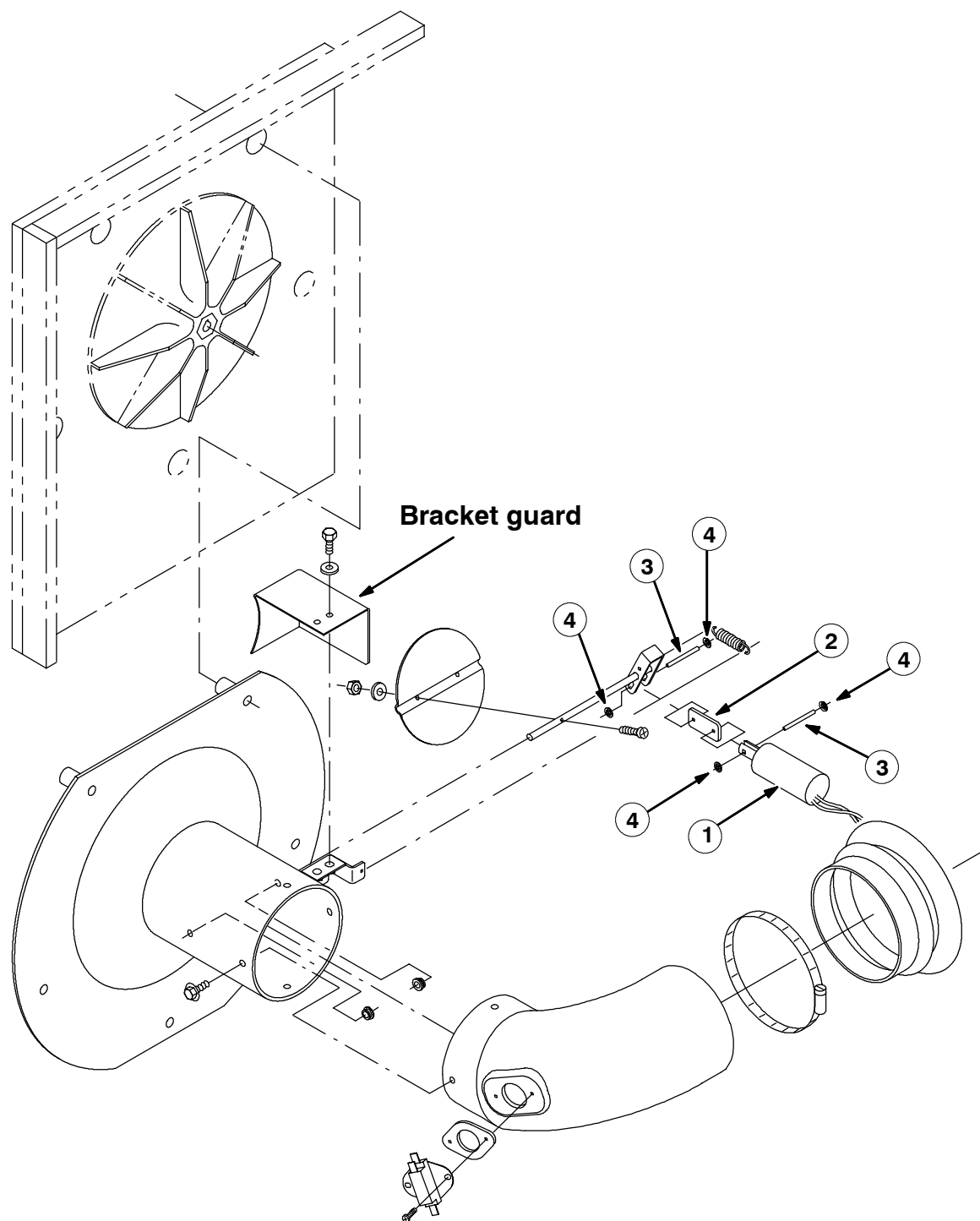


FIG. 4 - SOLENOID DAMPER KIT, 6200

BILL OF MATERIALS FOR SOLENOID DAMPER KIT 384169

Ref.	TENNANT Part No.	Description	Qty.
1	384464	Solenoid, 12VDC, Damper	1
2	384440	Link, 0.12T 0.7W 1.6L 2/0.14H	1
3	384410	Pin, pivot	2
4	384411	Retainer, shaft, 0.125 Dia	4